



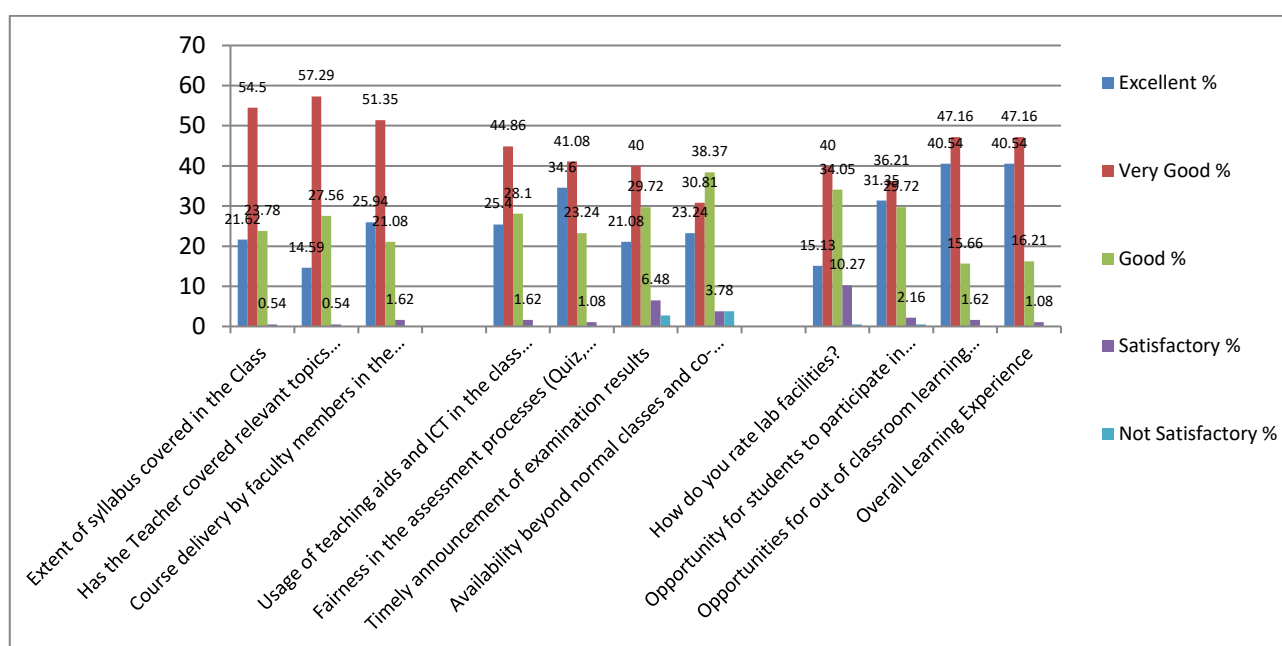
Dev Sangha Institute of Professional Studies and Educational Research

Analysis of Feedback (July-December, 2024)

The feedback was collected from the students, parents, teachers and alumnae about the quality and performance of Dev Sangha Institute of Professional Studies and Educational Research for the period July to December, 2024. The detailed analyses of the responses of the stakeholder's are as under.

1. Analysis of Students' Feedback:

Analysis of Students' Feedback, July-December, 2024

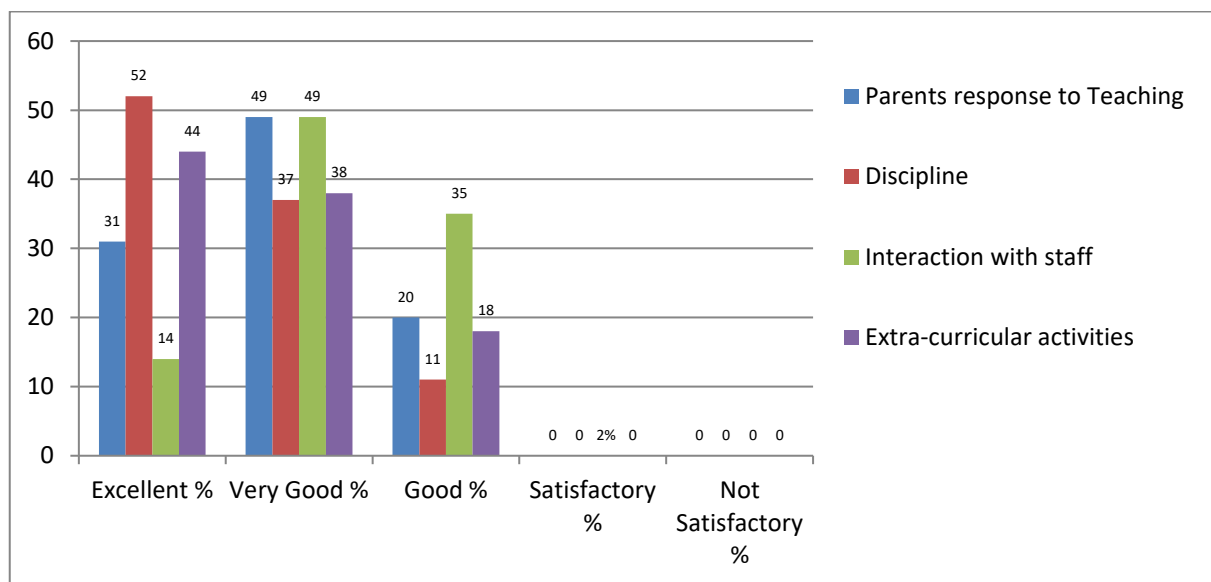


- The students' response to 'Extent of syllabus covered in the class' received 21.62% in excellent, 54.05% in very good, 23.78% in good, 0.54% in satisfactory and 0% in not satisfactory.
- The response on 'Has the teacher covered relevant topics beyond syllabus' by the students recorded to 14.59% in excellent, 57.29% in very good, 27.56% in good, 0.54% in satisfactory and 0% in not satisfactory.
- 'Course delivery by faculty members in the class' provided by the institute for the students recorded to 25.94% in excellent, 51.35% in very good, 21.08% in good, 1.62% in satisfactory and 0% in not satisfactory responses by the students, which indicate that the faculty are good in teaching.
- The students' response to 'Uses of teaching aids and ICT in the class by faculty to facilitate teaching' during the academic period is very overwhelming which received 25.40% in excellent, 44.86% in very good, 28.10% in good, 1.62% in satisfactory and 0% in not satisfactory. This indicates the teachers' uses teaching aids and ICT in their classes while teaching.
- Student response to 'Fairness in the assessment processes (Quiz, assignments, etc.)' received 34.60% in excellent, 41.08% in very good, 23.24% in good, 1.08% in satisfactory and 0% in not satisfactory.
-

- Student response to 'Timely announcement of examination results' received 21.08% in excellent, 40% in very good, 29.72% in good, 6.48% in satisfactory and 2.70% in not satisfactory.
- Student response to 'Availability beyond normal classes and cooperation to solve individual problems' received 23.24% in excellent, 30.81% in very good, 38.37% in good, 3.78% in satisfactory and 3.78% in not satisfactory.
- Student response to 'How do you rate lab facilities?' received 15.14% in excellent, 40% in very good, 34.05% in good, 10.27% in satisfactory and 0.54% in not satisfactory.
- Student response to 'Opportunity for students to participate in internship, student exchange, field visit, etc.' received 31.35% in excellent, 36.21% in very good, 29.72% in good, 2.16% in satisfactory and 0.54% in not satisfactory.
- Student response to 'Opportunities out of class room learning (guest lectures, seminars, workshops, value added programmes, conferences, competitions)' received 40.54% in excellent, 42.16% in very good, 15.66% in good, 1.62% in satisfactory and 0% in not satisfactory.
- Student response to 'Overall learning experience' received 40.54% in excellent, 42.16% in very good, 16.21% in good, 1.08% in satisfactory and 0% in not satisfactory.

2. Analysis of Parents' Feedback:

Analysis of Parents' Feedback, July-December, 2024

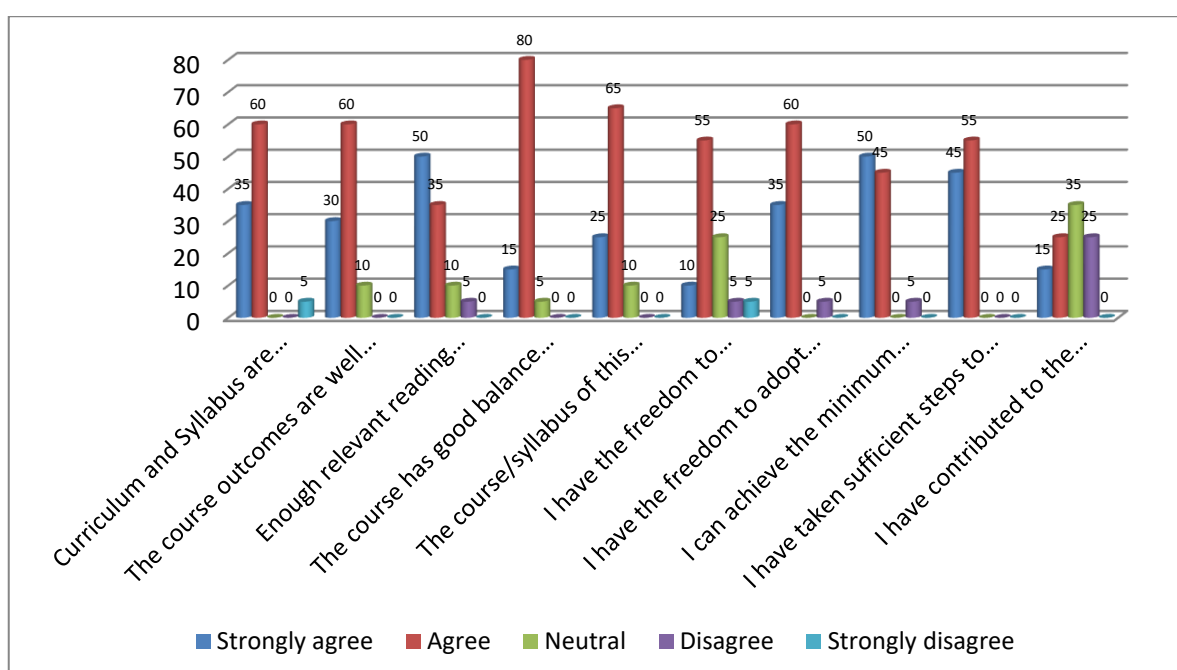


- The first question asked was 'Parents' Feedback on Teaching', which received a response from the parents to Excellent 31%, Very Good 49%, Good 20% and satisfactory 0% and not satisfactory 0%. From the response it could be concluded that efforts put by the teachers' in teaching the subject content is encouraging and need to put more efforts to receive the excellence mark. The bar diagram shows a positive sign and scope for further improvement.

- The second question was asked on 'Discipline' of Institute, which received 52% in excellent, 37% very good, 11% good, 0% satisfactory and 0% not satisfactory, which shows the DIPSER is one best disciplined teachers training institute in state. Therefore a scope for improvement is still there.
- The third question asked to the parents was on 'Parent's Feedback on Interaction' with Staff' which received a response of 14% in excellent, 49% in very good, 11% in good, 0% satisfactory and 0% not satisfactory. From the percentage of responses received by the parents it could be concluded that the different staff of the institute are very cordial and able to help the parents in resolving about their doubts and queries on a positive note.
- The fourth question was on 'Parents' Feedback on Extra-Curricular Activities', of the institute to which parents responded to 44% in excellent, 38% in very good, 18% in good, 0% in satisfactory and 0% in not satisfactory. It reflects from the feedback of the parents that institute gives due importance to extra curricula activities apart from curricula activity which is very important in all round development of the students and the DIPSER is committed to it.

3. Analysis of Teachers' Feedback:

Analysis of Teachers' Feedback, July-December, 2024

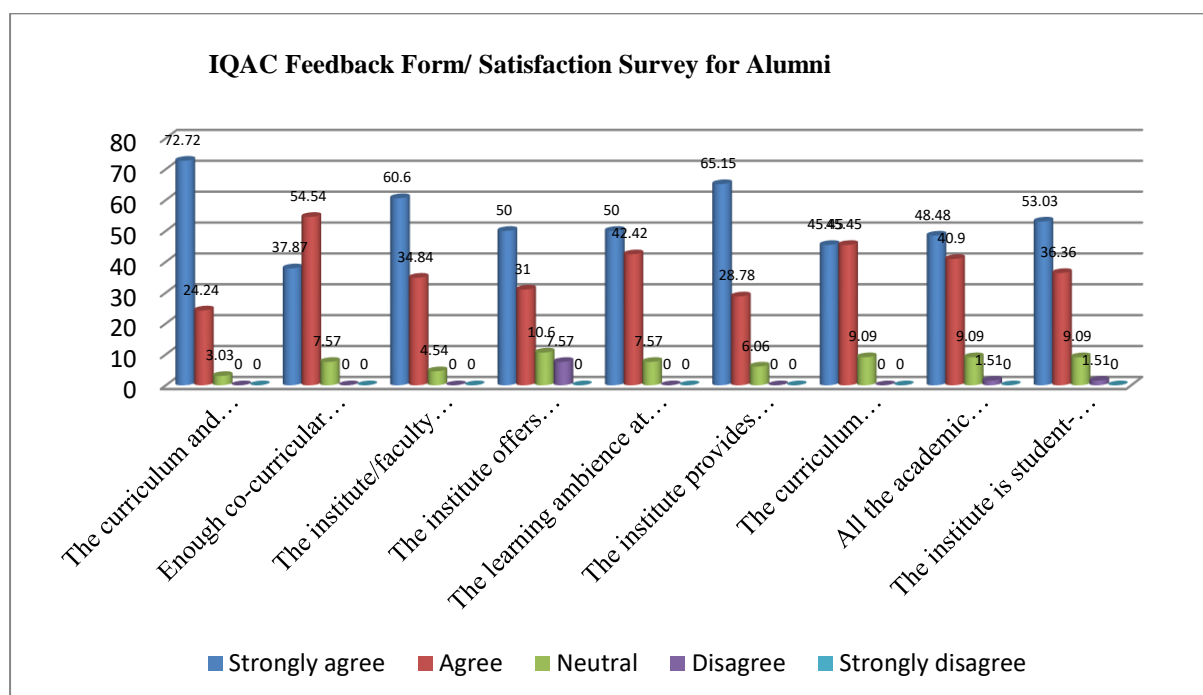


- The teacher's responses to 'Curriculum and Syllabus are need based' received 35% in strongly agree, 60% in agree and 0% in neutral, 0% in disagree and 5% in strongly disagree.
- The teacher response to the statement 'The Course Outcome are well defined and clear enough relevant reading materials and digital resources are available in the library' received 30% strongly agree, 60% agree, 10% in neutral and 0% in disagree and 0% strongly disagree.
- 'Enough relevant reading materials and digital resources are available in the library received the response from the teachers' to 50% in strongly agree, 35% in agree, 10% in neutral 5% in Disagree and 0% in strongly disagree.

- The course has good balance between theory and application' received the response from the teachers' to 15% in strongly agree, 80% in agree, 5% in neutral 0% in Disagree and 0% in strongly disagree.
- The statement 'The course/syllabus of this course increased my knowledge and perspective in the subject area, I have the freedom to propose, modify, suggest and incorporate new topics in the syllabus through proper forum' received a response from the teachers to 25% in strongly agree, 65% in agree, 10% in neutral and 0% in disagree and 0% in strongly disagree.
- 'I have the freedom to propose, modify, suggest and incorporate new topics in the syllabus through proper forum.' received the response of teachers' to 10% in strongly agree, 55% in agree and 25% in neutral, 5% in disagree and 5% in strongly disagree.
- The statement 'I have the freedom to adopt new techniques/education tools/ strategies in teaching' received the response of teachers' to 35% in strongly agree, 60% in agree and 0% in neutral, 5% in disagree and 0% in strongly disagree.
- The statement 'I can achieve the minimum required course outcome attainment level for my class received the responses from the teachers to 50% in strongly agree, 45% in agree, 0% in neutral, 5% in disagree and 0% in strongly disagree.
- The statement 'I have taken sufficient step to help slow learners' received a response from the teachers' to 50% strongly agree, 45% to agree, 55% remained neutral, 0% disagree and 0% strongly disagree.
- The statement 'I have contributed to the curriculum and /or syllabus development' received a total response from the teachers to 15% strongly agree, 25% to agree, 35% to neutral, 25% to disagree and 0% to strongly disagree.

4. Analysis of Alumnae Feedback:

Analysis of Alumnae Feedback, July-December, 2024



- The alumnae feedback on the 'The curriculum and syllabus content were appropriate for my placement/higher education' received the response to 72.72% in strongly agree, 24.24% in agree and 3.03% in neutral, 0% in disagree and 0% in strongly disagree, which means the majority of the alumni are of the opinion that the curriculum and syllabus content of teacher education course taught in the college is appropriate for their placement and also in continuing with their higher education.
- The statement "Enough co-curricular activities were arranged during my study period," received responses by the alumnae to 37.87% in strongly agree, 54.54% in agree, 7.57% in neutral, 0% in disagree and 0% in strongly disagree.
- The statement "The Institute/Faculty helped me in Placement/Higher Education" received responses from the alumnae to 60.6% in strongly agree, 34.84% in agree, 4.54% in neutral and 0% in disagree and strongly disagree. The overwhelming response shows that the institute and the faculty are serious in doing the placements of its students after completion of their course and also provide necessary guidance to those who wants to continue with their higher studies.
- The statement, "The Institute offers sufficient scholarships to merit students and deserving students" received responses to 50% in strongly agree, 31% in agree, 10.6% in neutral, 7.75% in disagree and 0% in strongly disagree. The responses received is a good sign that the institute is concern about the students financial issues so that no students should remained left out of their study due to dearth of financial crisis.
- The statement, 'The learning ambience at the Institute is good' received responses from the alumnae to 50% in strongly agree, 42.42% in agree, 7.57% in neutral, 0% disagree and 0% to strongly disagree. The response received is boost to the institute and should take more steps to make it much better.
- The statement "The Institute provides sufficient opportunity to participate in extracurricular activities," received responses from the alumnae to 65.15% in strongly agree, 28.78% in agree, 6.05% in neutral and 0% in disagree and strongly disagree. This shows that the institute provides sufficient opportunities to its students to take part in the extracurricular activities.
- The alumnae feedback on the statement, "The curriculum accommodates courses with experiential learning (hands-on)," received responses from the alumnae to 45.45% in strongly agree, 45.45% in agree, 9.09% in neutral and 0% in disagree and strongly disagree. This is a good sign that the institute provide hands on learning experience to its students.
- The alumnae feedback on the descriptor, "All academic processes of the Institute are transparent," received responses from the alumnae to 48.48% in strongly agree, 40.9% in agree, 9.09% in neutral, 1.51% in disagree and 0% in strongly disagree; which shows that institute follows a very transparent policy in its academic activities.
- The alumni feedback on the statement, "The Institute is student centric in all its academic initiatives," received responses from the alumnae to 53.03% in strongly agree, 36.36% in agree, 9.09% in neutral, 1.51% in disagree and 0% in strongly disagree. The percentage of positive response from the alumni is boost to the institute that the institute functions for the benefit of its students.